

AFREhealth-CUGH Working Group (ACWG) Satellite Meeting

AFREhealth and CUGH: Plotting an Actionable Path forward for Collaborative Partnerships

March 15th, 2018: 1 – 5 pm

Prof. Quentin Eichbaum

MD, PhD, MPH, MFA, MMHC, JD, BSc(Med)(Hons), BA(Hons), FCAP, FASCP

Co-Chair ACWG;

Chair, CUGH Education Committee; Board member
Vanderbilt University School of Medicine

Consortium of
Universities
for Global Health



What is CUGH - Summary

- **FOUNDED 2008:** Seed funding from the Bill and Melinda Gates Foundation and the Rockefeller Foundation
- Amalgamated with “GHEC” (founded 1990’s) to form CUGH
 - Secretariat opened Washington, DC: **Sept 2012;**
- Largest academic global health organization in the world
 - **~ 165 academic institutions, associations, NGOs, other partners**
 - **Network of + 30,000 individuals worldwide**

MISSION: CUGH supports academic institutions and partners to improve the wellbeing of people and their environments through education, research, service and advocacy.

CUGH Standing Committees

1. Advocacy and Communications
- 2. EDUCATION COMMITTEE – 8 subcommittees**
3. Enabling systems Committee
4. Executive Committee
5. Finance Committee
6. Membership Committee
- 7. Research Committee**



CUGH Education Subcommittees

Subcommittees of the Education Committee

1. Capacity Building Subcommittee (CBS)
2. Conference Planning Education Subcommittee
3. Educational Products Subcommittee (EPS)
4. Competency Subcommittee
5. GH Program Advisory Service Subcommittee (GHPAS)
6. Workforce Subcommittee
7. Undergraduate/Masters Subcommittee
8. Trainee Advisory Committee (TAC)

• Working groups

- Ethics and Best Practices in Global Health Education
- Global Health Law & Human Rights
- Graduate Medical Education (GME) in Global Health

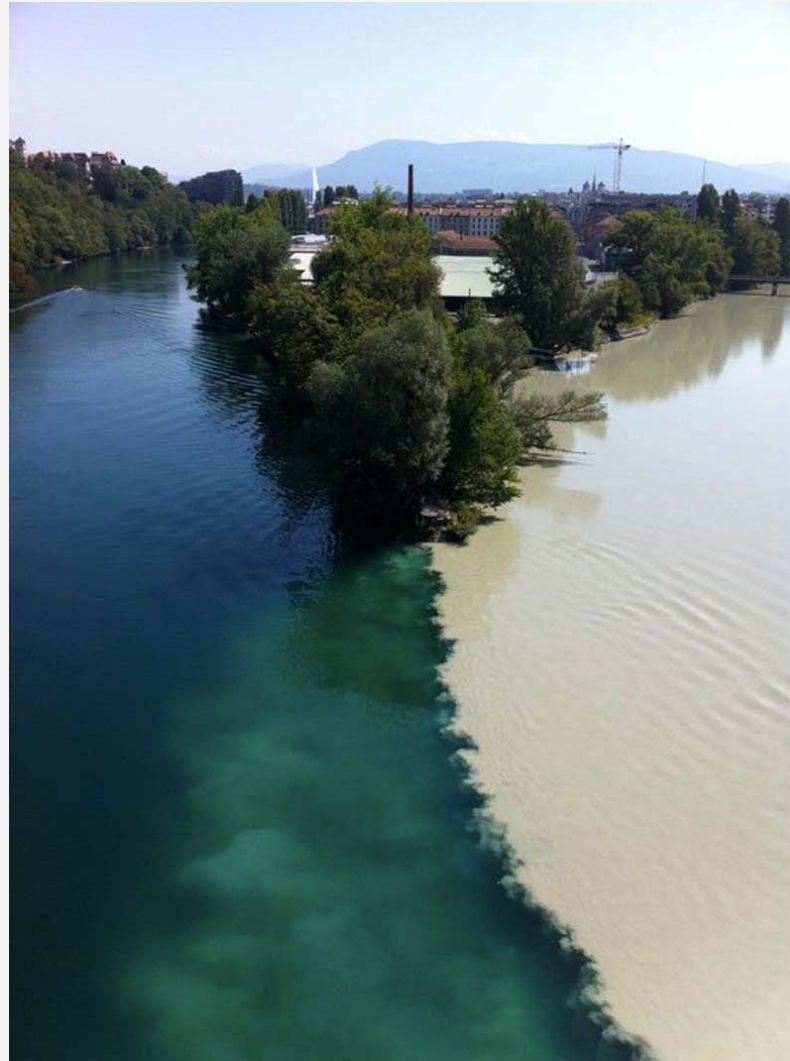
• Task forces

- Education Abstracts Review TF
- Hall Grant Review Group (GRG)



Explore **Confluences** between AFREHealth and CUGH

Consortium of
Universities
for Global Health



Capacity Building Subcommittee (CBS)

Chair: Dr Andrew Dyckens

CUGH's Capacity Building Sub-Committee (EC-CBS) Call for Membership



This sub-committee's (SC) mission is to a) help identify, catalog and aggregate training, curricula and human resource needs from low and middle income countries (LMICS), b) identify context relevant training programs/resources, and c) share this information through a web based platform housed on the CUGH website. Click on the "Read more" link below for more information.

AFREHEALTH-CUGH CONFLUENCE

- Aligns with AFREhealth experience in network capacity building from MEPI/NEPI
- Pitfall: User-ability? Curating the database of sustainable partnerships?

Educational Products Subcommittee (EPS)

Chairs: Dr Lisa Adams and Dr Cynthia Stuhlmiller

- Create and promote educational products and courses of relevance to global health.
- Categorize and curate listings of high quality global health open access courses, curricula, guides, webinars
- **AFREHEALTH CONFLUENCE:**
- MEPI E- learning TWG; “Monitory /Evaluation” & Info science TWG?
- Pitfall?
- Curation of products; developing products appropriate for LMIC contexts

Competency & Workforce Subcommittees

Chairs: Dr Jessica Evert & Dr Quentin Eichbaum

- “Toolkit” of global health competencies (updates); various studies eg LMIC host expectations study in 8 countries

- <http://cugh.org/resources/2063>

Competency 3a: Describe how cultural context influences perceptions of health and disease (Global Citizen Level and Basic Operations Levels)

Prepared by: Brian Callender (bcallend@medicine.bsd.uchicago.edu)
Revised by: Lynda Wilson, University of Alabama at Birmingham (lynda.wilson@uab.edu),
Michelle Holm, Mayo Clinic (holm.michelle@mayo.edu)

Teaching Strategies:

Initial background on this topic will likely require a combination of landmark articles or a textbook assigned as required reading, with supplemental assignments of videos, blogs, exploring websites, lecture or in-class activities to contrast various national health system models. Interactive possibilities for simulation, “flipped classroom,” or team-based learning activities include having students prepare presentations illustrating the role culture has on health and health care delivery and reflecting personal experiences. If possible, clinical experiences can be arranged to immerse trainees in different cultures. Students might be encouraged to interview people from different cultures to ask about their views about health and illness.

Websites:

1. Centers for Disease Control and Prevention. (2016). Social determinants of health: Know what affects health. Retrieved from <http://www.cdc.gov/socialdeterminants/>

- Workforce SC – Graduate/employer expectations surveys

AFREhealth-CUGH confluence

- MEPI competency-based education TWG

Pitfall?

- Appropriate assessment of (HIC?) competencies in LMIC contexts?
- Workforce expectations difference in LMICs versus HICs?

Undergraduate/Masters Subcommittee

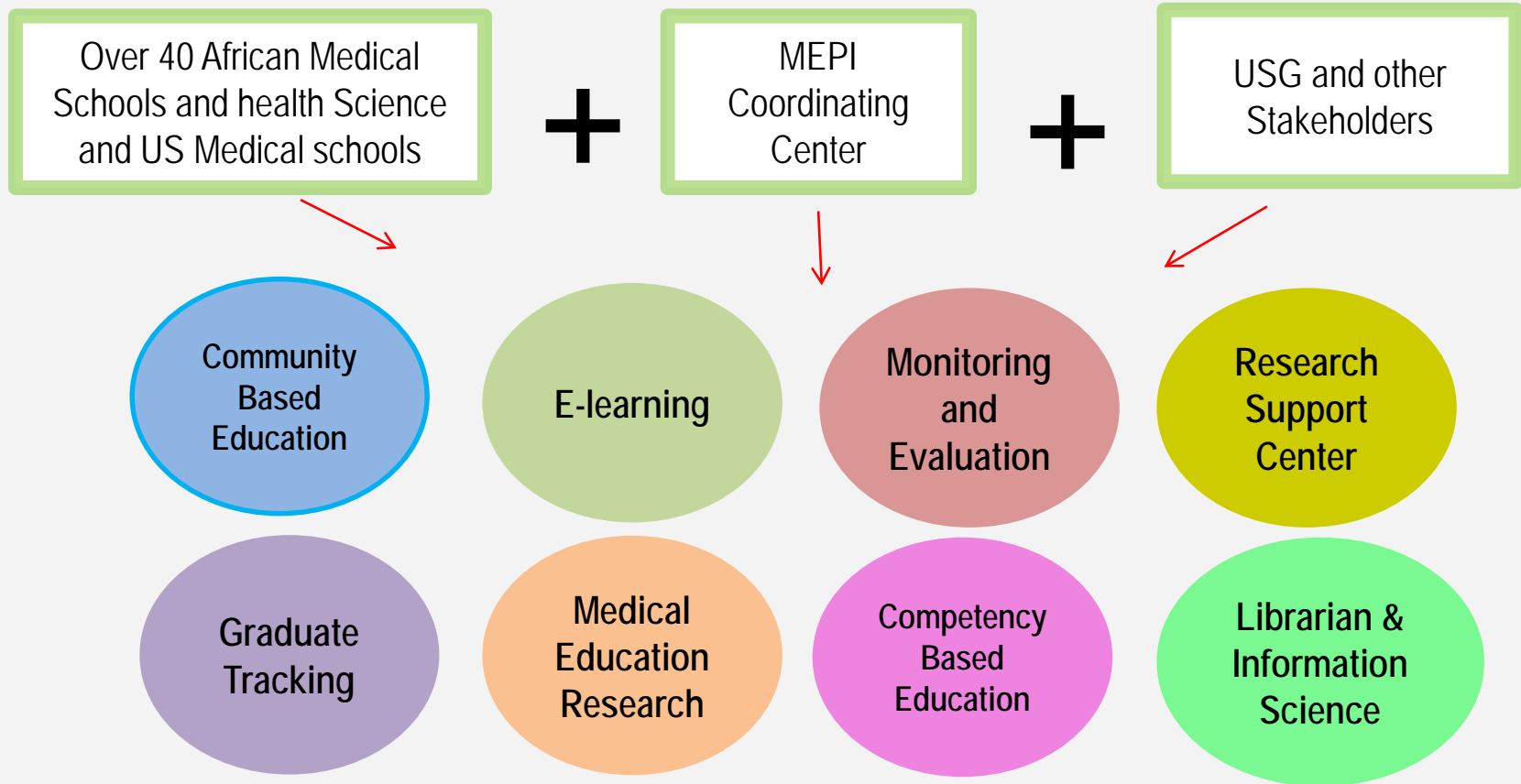
Chairs: Dr Paul Drain and Dr Ashti Doobay-Persaud

- Reviews curricula resources and competencies for undergraduate and Masters level global health programs
- Suggests “Best practices” for Improving education programs
- **AFREHEALTH=CUGH CONFLUENCE:**
 - Graduate tracking TWG? Which degree programs in Africa match the “global health” programs of HICs? Public health family medicine?
- **Pitfall**
 - Concept of “global health” different in LMICs/Africa.
 - Curricula mismatch and concerns?

MAPPING AFREhealth/MEPI TWGs
To
CUGH Education Subcommittees (SCs)

Building the Human Bond

The 8 Eight Technical Working Groups (TWG)



Mapping AFREHealth/MEPI TWGs - to CUGH SCs

STRONG MAPPING

Medical Education Research

All CUGH Education SCs do research

Competency Based Education

CUGH Competency & Workforce SC

Graduate Tracking

CUGH Under & Post Graduate SC & GME TF

E-learning

CUGH Education Products SC

INTERMEDIATE/INDIRECT MAPPING

Research Support Center

CUGH Education & Research Committees

Monitoring and Evaluation

All CUGH Education SCs asked to engage in M&E

LOOSE MAPPING

Community Based Education

Librarian & Information Science

Thanks for your attention!

Contact info: geichbaum@gmail.com

Tel: +1-615-936-5124