

CUGH Webinar: Canadian Global Health Institutions

October 14, 2020

2:00pm EDT

Moderator



Greg Hallen

Food, Environment and
Health Program Leader
International Development
Research Centre



Leeat Gellis

Director
Open Innovation Grand
Challenges Canada



Charles P. Larson, MDCM, FRCP(C)

Director
Global Health Programs
McGill University



Keith Martin, MD, PC

Executive Director
Consortium of
Universities for Global
Health

Consortium of
Universities
for Global Health



Consortium of Universities for Global Health

1608 Rhode Island Ave. NW, Suite 240

Washington, DC 20036

+1(202)-974-6363

info@cugh.org

www.cugh.org

Twitter: [@CUGHnews](https://twitter.com/CUGHnews)

[@CUGH_TAC](https://twitter.com/CUGH_TAC)



IDRC | CRDI

International Development Research Centre
Centre de recherches pour le développement international

50
1970-2020

Canada



Knowledge. Innovation. Solutions.

Savoir. Innovation. Solutions.



IDRC's Value Proposition

- IDRC funds research to foster large scale positive change, sustainable and equitable development and self-reliance.
- IDRC contributes knowledge, innovation and action toward global goals
- IDRC enables voice and agency of people in the Global South.
- IDRC's expert staff enhance the quality and impact of the research results.
- IDRC builds capacity and leadership for research, innovation and evidence-based decision making
- IDRC is nimble; it can move quickly, innovate and take risks. IDRC also invests over the long term
- IDRC is a global leader in development research and creates long-term goodwill and global partners for Canada.
- IDRC's Board of Governors ensures focus on the needs of the developing world and accountability to the Canadian public.

At 50: A 10 year, ambitious strategic plan, with transitioning Program foci

2015 - 2020

Agriculture and Environment

- Agriculture and Food Security
- Climate Change
- Food, Environment, and Health

Inclusive Economies

- Employment and Growth
- Governance and Justice
- Maternal and Child Health
- Think Tank Initiative

Technology and Innovation

- Foundations for Innovation
- Networked Economies

in process



2020 - 2030

Climate and food systems

- Catalysing change for healthy, sustainable food systems.
- One Health, Antimicrobial resistance

Health equity

- Pandemic response, prevention, preparedness.
- Sexual and reproductive health and rights

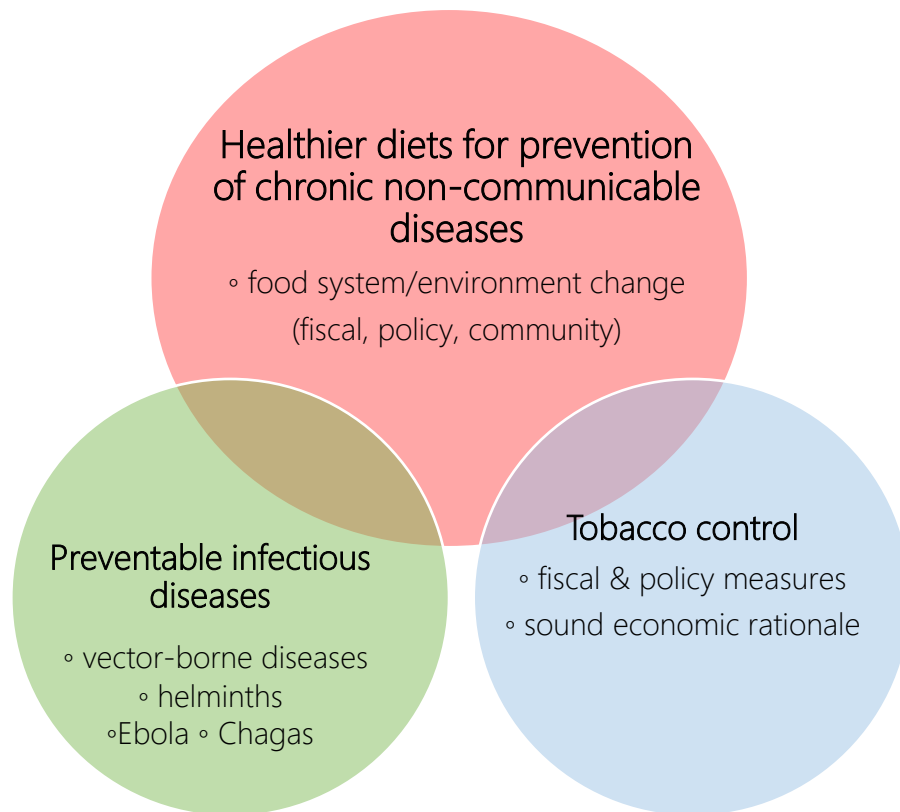
Governance for democracy

Education and innovation

Sustainable and inclusive growth

Food, Environment, and Health

A population health research program with 3 foci



A common, binding goal of **prevention** by:

- Addressing determinants of health and risk factors for disease through actions that are largely **outside the control of the health sector**
- Changing the environment and circumstances in which people live to enable better health

Innovating for Maternal and Child Health in Africa (IMCHA)

IMCHA is:

- A joint initiative of the Canadian Institutes for Health Research (CIHR), Global Affairs Canada (GAC) & the International Development Research Center (IDRC)
- CAD 36 millions
- 7 years: 2014 – 2020
- 11 countries: Burkina Faso, Ethiopia, Kenya, Malawi, Mali, Mozambique, Nigeria, Senegal, South Sudan, Tanzania, Uganda.

IMCHA supports:

- **19 Research Teams** with:
 - ❖ One original grant to each, called **Implementation Research Teams (IRTs)**. Each Team is led by a core group composed of: PI = African researcher; Co-PI = Canadian researcher; Co-PI decision-maker = African
 - ❖ **Synergy Grants**, awarded to **9 Research Teams** in 2017 on a competitive basis , to allow them to conduct supplementary research activities or explore complementary promising areas of focus not included in the IRTs.
- **2 Health Policy and Research Organizations (HPROs)**: to provide research training and foster uptake of evidence into policy and practice

Earthscan Studies in
Natural Resource Management

earthscan
from Routledge

INTEGRATED NATURAL RESOURCE MANAGEMENT in the Highlands of Eastern Africa

From concept to practice



Edited by Laura German, Jeremias Mowo,
Tilahun Amede and Kenneth Masuki

in_focus

Health

AN ECOSYSTEM APPROACH
by Jean Lebel

Foreword by Pierre Dansereau

THE ISSUE

CASE STUDIES

LESSONS AND RECOMMENDATIONS

International Development Research Centre


Insight and Innovation in International Development

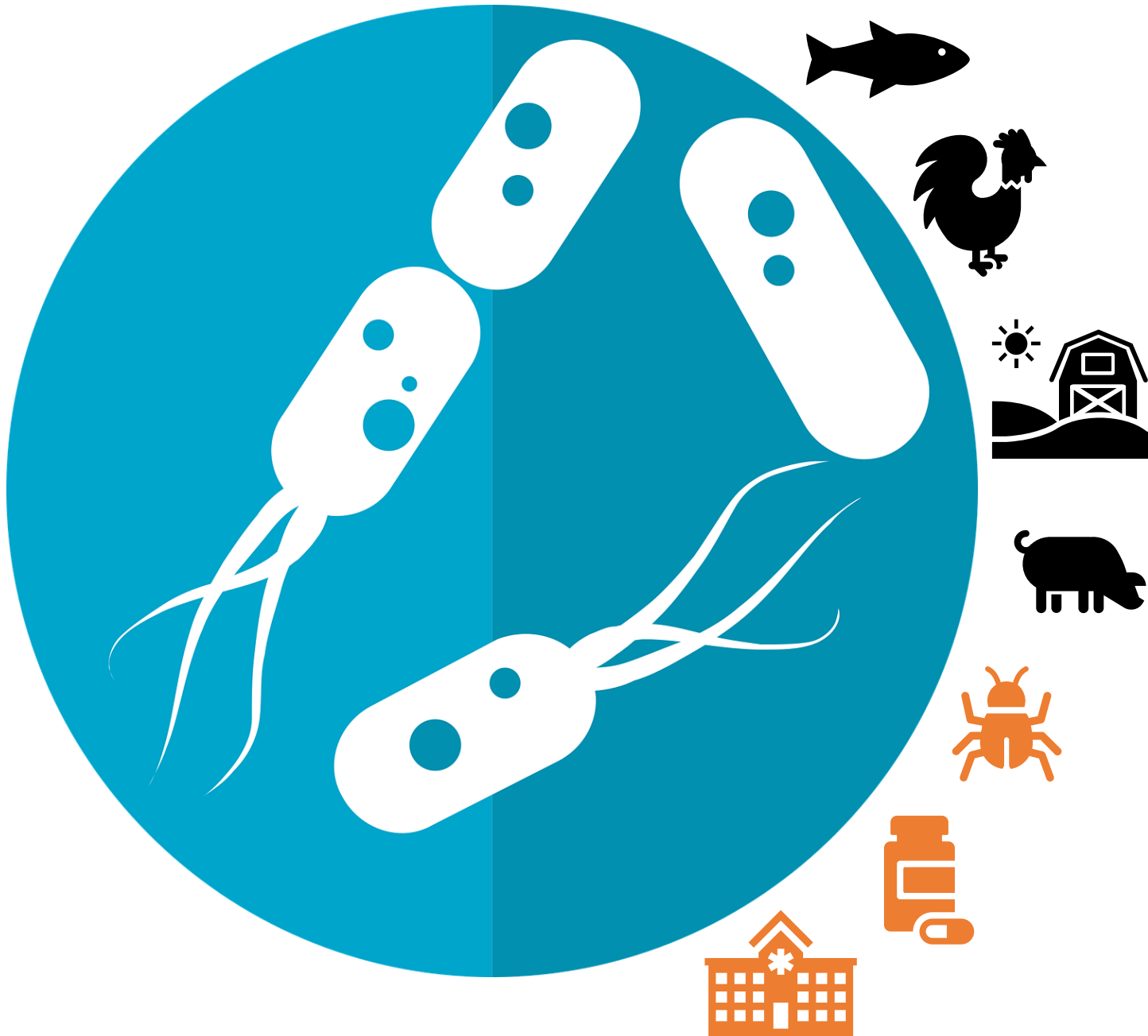
Dominique F. Charron
Editor

Ecohealth Research in Practice

Innovative Applications
of an Ecosystem Approach to Health

IDRC  CRDI

 Springer



Animal
Health, One
Health

Antimicrobial
RESISTANCE

IDRC's response to COVID-19

- Contributed CA\$1.5 million to the first [Covid Rapid Research Response](#) with Canadian Tri-Councils (March 2020)
- CA\$7 million contribution to the [Canadian continued rapid response](#)
- Work with Science Granting Councils in Africa to support domestic funding to research response CA\$2.5m+
- Ongoing engagement with the Global Research Collaboration for Infectious Disease Preparedness (GloPID-R)
- Artificial Intelligence and Data Innovation fund to enable LMICs respond to COVID-19 and future pandemics (launching soon) CA\$6m
- Think COVID initiative: Evidence for socio-economic policies (including health) in response to pandemic impact CA\$25m
- Support research to help displaced women and girls and countries with large displaced populations put in place responses to COVID-19 with a focus on public health, community agency and social challenges affecting refugee populations.
- Teams from the 2018 Rapid Research Fund for Ebola in DRC are applying tools for Covid-19 (e.g. psychosocial intervention guide)
- \$5M to understand the impact on food security and strengthen resilience of food systems.

Partnerships



CENTRE OF EXCELLENCE
for CRVS Systems



Schweizerische Eidgenossenschaft
Confédération suisse
Confederazione Svizzera
Confederaziun svizra

Development and Cooperation



**CANCER
RESEARCH
UK**



Partnerships



Global Environmental and Occupational Health (GEOHealth) Hub program

- LMIC regional hubs for collaborative research, data management, training, curriculum and outreach material development, and policy support around high-priority local, national and regional environmental and occupational health threats
- support a global network of hubs that serves as a platform for coordinated research and training activities in environmental and occupational health.

Partnerships

Catalysing Change for Healthy and Sustainable Food Systems

Soon to be announced, with the Rockefeller Foundation:

Recognising the nutrition transition, the generation of locally led, context-specific evidence will inform food systems that deliver **human health** and **environmental co-benefits**.

Partnerships

Joint Canada-Israel Health Research Program

7-year, CA\$35M Canadian-Israeli effort that draws on the unique scientific strengths of both countries and facilitates networking opportunities with peers from Africa, Asia, and Latin America for cutting edge biomedical research

RQ+ Assessment Framework

The RQ+ Assessment Framework provides a systems-informed approach to defining and evaluating the quality of research, and its positioning for use and impact. It allows tailoring to context, values, mandate and purpose, and can support planning, management and learning processes at any stage in the lifetime of a research project, program or grants portfolio.



 **Research Quality Plus**
A Holistic Approach
to Evaluating Research

Framework Components

The RQ+ Assessment Framework consists of three main components:



1. KEY INFLUENCES

Constraining and enabling contextual influences - within or external to the research effort - most likely to affect research performance are identified.

The rating of the key influences using rubrics and a three point scale (e.g. low, medium, high) establishes a risk profile that is used to inform the quality assessment.

The key influences can be 1) constraining (negative) or 2) facilitating / enabling (positive)

Examples from IDRC experience:

- 1) Maturity of the research field
- 2) Research capacity strengthening
- 3) Risk in the data environment
- 4) Risk in the research environment
- 5) Risk in the political environment



2. DIMENSIONS & SUBDIMENSIONS

The four dimensions and their subdimensions encapsulate the quality assessment criteria.

Tailored for IDRC:

1. **Research Integrity**
2. **Research Legitimacy**
 - 2.1 Addressing potentially negative consequences
 - 2.2 Gender-responsiveness
 - 2.3 Inclusiveness
 - 2.4 Engagement with local knowledge
3. **Research Importance**
 - 3.1 Originality
 - 3.2 Relevance
4. **Positioning for Use**
 - 4.1 Knowledge accessibility & sharing
 - 4.2 Timeliness and actionability



3. EVALUATIVE RUBRICS

Performance is characterized using customizable research quality rubrics.

Characterization of each key influence, dimension and subdimension is done using tailored rubrics that combine quantitative and qualitative measures.

Ratings on an 8 point scale show four levels of performance (or progress). This is an example. Scales should be created to fit a purpose or intention.



Quality Dimensions

1. Research integrity
2. Research Legitimacy
3. Research Importance
4. **Positioning for Use**
 - 4.1 Knowledge accessibility and sharing
 - 4.2 Timeliness and actionability



<https://www.idrc.ca/en/research-in-action/research-quality-plus>



IDRC | CRDI

International Development Research Centre
Centre de recherches pour le développement international

50
1970-2020

Canada



Knowledge. Innovation. Solutions.

Savoir. Innovation. Solutions.

What is Gender Transformative Research?

- Addresses **root causes** that impact and/or perpetuate vulnerability and inequality: underlying gendered social norms and power relations.
- Addresses **systemic or structural** barriers - formal (policies, laws, budgets) and informal (underlying norms, attitudes, behaviors).
- Recognizes how gender **intersects** with age, race, caste, and socio economic status.
- Combines knowledge generation with a **process that embeds change** in gender relations locally.



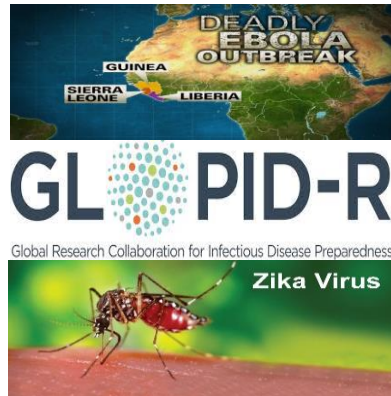
Joint Initiatives with the Canadian Institutes for Health Research



Global Alliance for Chronic Diseases



Innovating for Maternal and Child Health in Africa



Collaboration on preparedness and response to public health emergencies





Grand Challenges Canada[®]
Grands Défis Canada

Canadian Global Health Institutions

Leeat Gellis, Director of Open Innovation

OCTOBER 14, 2020

What is Grand Challenges Canada?

Grand Challenges Canada is an innovation platform that seeds and transitions to scale scientific, social and business innovation to drive sustainable impact.



Our innovation platform is designed to:

- Deploy both **grant and non-grant financing**
- Fund and enable innovation in **low- and middle-income countries and Canada**
- Apply the best of **public and private approaches**
- **Accelerate impact** through provision of individual and collective support to innovators
- **Iterate and evolve** to improve our value for money

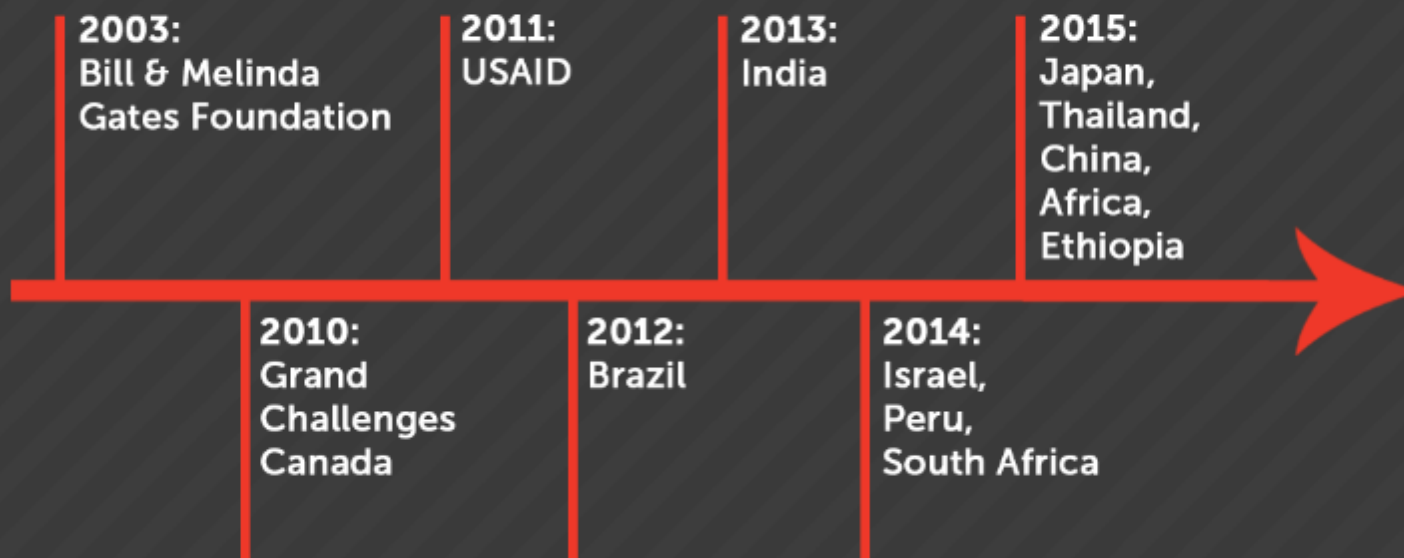


Grand Challenges Canada®
Grands Défis Canada

Innovation for Impact Ecosystem

Grand Challenges Canada is a founding member of global partnership networks committed to scaling innovation for impact in the development sector.

Network Promoting Global Health Innovation through a Grand Challenges Approach



INTERNATIONAL DEVELOPMENT INNOVATION ALLIANCE

BILL & MELINDA
GATES foundation

Canada

GLOBAL
INNOVATION
FUND

Australian
Aid



USAID
FROM THE AMERICAN PEOPLE

Grand Challenges Canada
Grands Défis Canada

The ROCKEFELLER
FOUNDATION

giz Deutsche Gesellschaft
für Internationale
Zusammenarbeit (GIZ) GmbH

unicef

WORLD BANK GROUP

Sida

RESULTS FOR
DEVELOPMENT

UKaid
from the British people

Department
for International
Development

UN
DP

Empowered lives.
Resilient nations.

Partnerships for Impact

Anchor partner in
Development Innovation:



Global Affairs
Canada

Affaires mondiales
Canada



Canadian Institutes of
Health Research
Instituts de recherche
en santé du Canada



Innovation Pipeline



1,300+ innovations
supported to date

63% of projects
led by innovators based in
LMICs or conflict areas



Innovators in
94 countries
implementing in
106 countries



\$2.02 leveraged
from investors and
partners for every
**\$1 of Government of
Canada funding**
deployed

Lives Saved and Improved



492,000 – 1.78 million lives expected to be saved by 2030 through the use of innovative products and services proven to save lives

37,800 lives saved to date



20 – 64 million lives expected to be improved by 2030 through the use of innovative products and services proven to improve lives

7.5 million lives improved to date

Hosts open and targeted programs supporting reproductive, maternal, newborn, child and adolescent health innovation in low- and middle-income countries.



**Open
Innovation**



**Saving
Lives at Birth**



Saving Brains



**Global
Mental Health**



**OPTions
Innovation
Initiative**

SEED SUPPORT

TRANSITION TO SCALE SUPPORT

ECOSYSTEM SUPPORT

Seeks to identify and support innovative local solutions that engage the private sector and draw from the experiences of affected communities to save and improve the lives of vulnerable people affected by conflict.



Initial calls for innovation (Rounds 1 & 2) focused on:
clean water and sanitation, health supplies and services, life saving information and energy



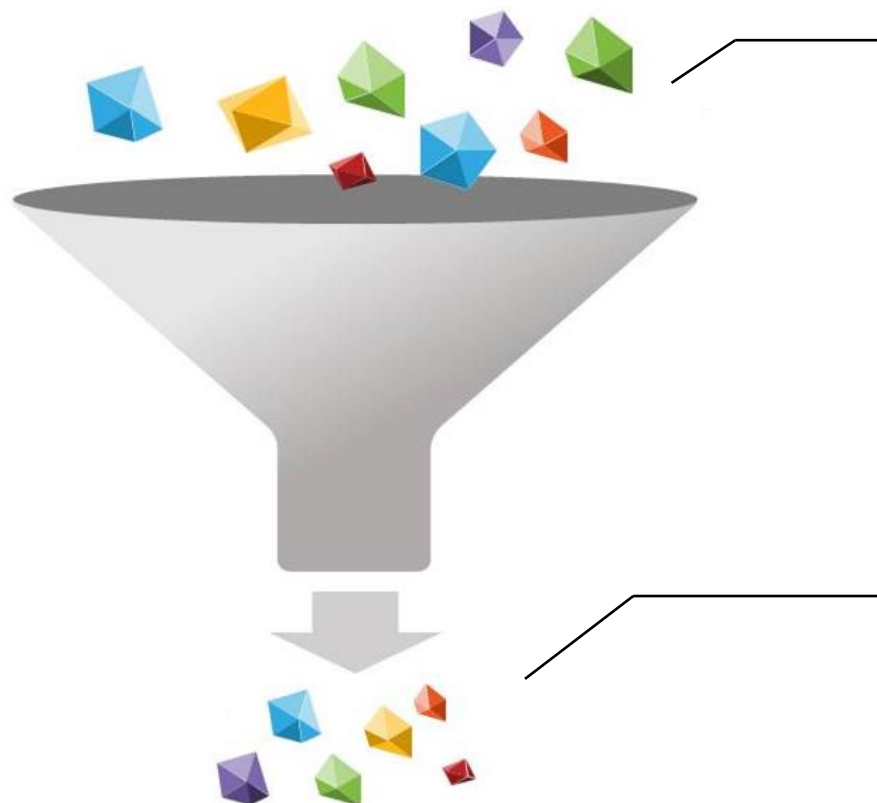
Indigenous Innovation

Aims to empower Indigenous innovators and communities to identify and solve their own challenges, transforming lives and driving inclusive growth and health through innovation and social entrepreneurship.



Initial seed funding call focused on “**Advancing Indigenous Gender Equality through Innovation and Social Entrepreneurship**”; collaboration and consensus building efforts have identified Grand Challenges in **Indigenous Mental Health**





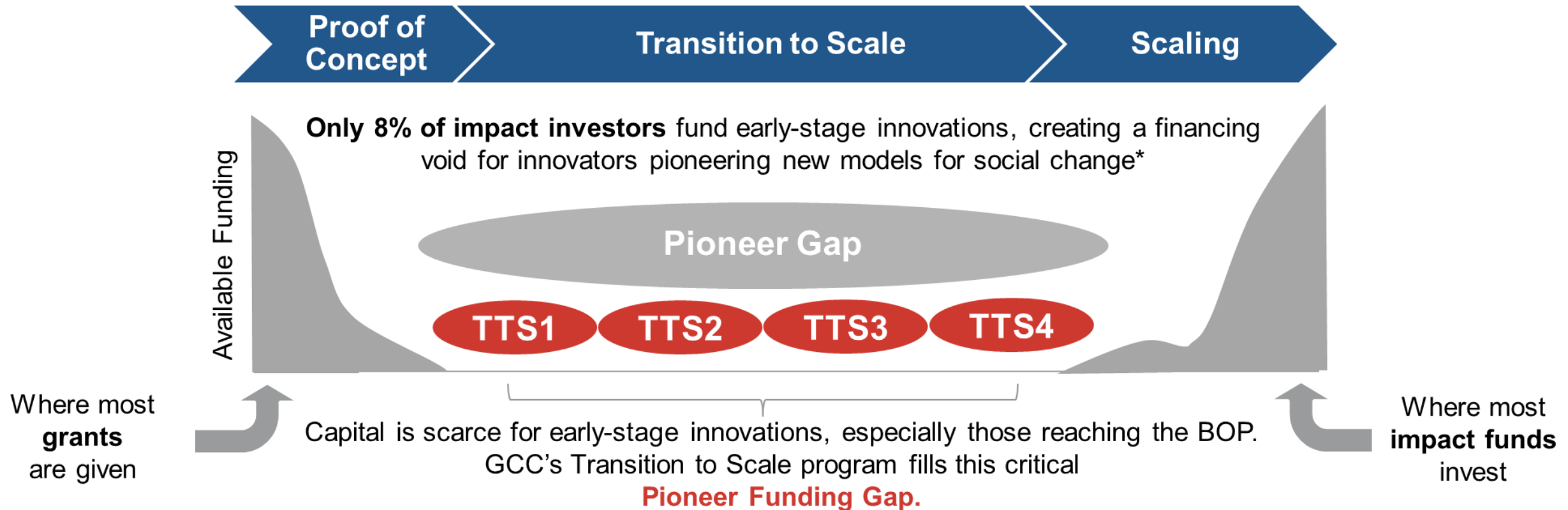
Seed

- **Testing** bold new ideas
- Application via open Request for Proposals
- **\$100K - \$250K CAD** over **18-24 months**
- Over 1,060 innovations since 2010

Transition to Scale

- **Refining** proven ideas, **bridging to scale and sustainability**
- Application by invitation only
- Up to **\$1M CAD** over **12-36 months**
- Over 230 innovations since 2011

Pioneer Gap



What do we look for at Transition-to-Scale?

1. Is it a **BOLD IDEA**?

- What makes the innovation novel or superior to alternatives/competitors?

2. Will it have **BIG IMPACT**?

- What is the evidence generated to date? What is the potential impact (modelling out to 2030)?

3. Is there a viable path to **SCALE**?

- Is it going down a public, private or hybrid path? Are there smart partners on board?

4. Is there a viable path to **SUSTAINABILITY**?

- Who will ultimately pay for the solution?

5. What is GCC's unique **VALUE ADD**?

- Would another funder invest without GCC? Is GCC able to offer value beyond money?

Capacity-Building, Accompaniment for Transition to Scale

All innovations supported at Transition to Scale must undergo extensive selection, due diligence and approvals processes, pre- and post-funding.

Innovations considered

Application materials received and reviewed



Assessment Criteria:

- Competitive advantage
- Proof of concept
- Potential for sustainability
- Identified path to scale
- Portfolio fit

Due diligence

Independent scientific review by CIHR and/or EWEC IM and internal due diligence



Due Diligence:

- Health outcomes
- Smart partners
- Team and governance
- Sustainability
- Market
- GCC value add

Approved for funding

BOD approved deals and \$ committed



Negotiations:

- Goal- and milestone-driven funding structures
- Global access
- Monitoring and evaluation systems

Innovations funded

Unique innovations funded and \$ committed



Enabling Success:

- Monitoring and evaluation
- Support for networking, fundraising and partnerships
- Optimizing governance
- Targeted technical assistance

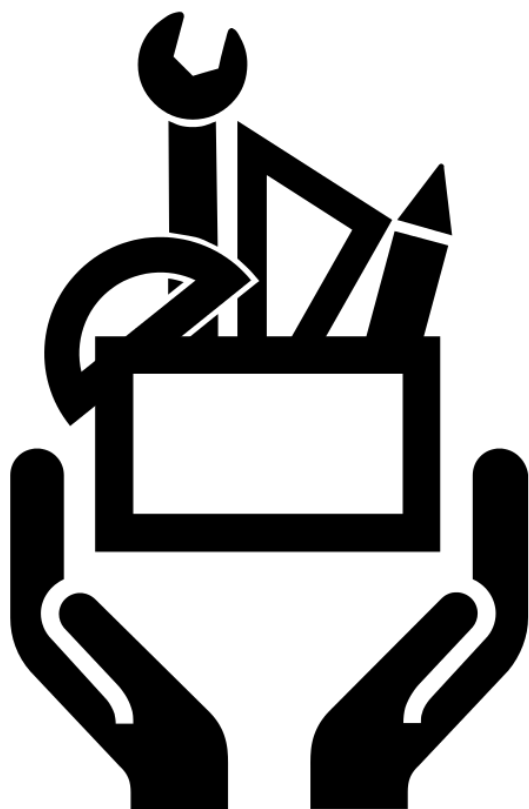
Closed

Project period has ended



*Cumulative Transition to Scale pipeline progress, from March 1, 2016 (inception of IP4MNCH agreement with Global Affairs Canada) to March 31, 2020

Grand Challenges Canada applies multiple models of targeted technical assistance to help innovators fill gaps in knowledge, resources and experience.



Accelerator

- **Group learning** of basics for scale and sustainability plans



Venture Advisors

- **1:1 support** for governance, gender equality, monitoring & evaluation, marketing, sustainability, fundraising



Ongoing and Ad-Hoc Support

- Facilitating access to **networks and partners**



Communities of Practice:

- **Location-based** e.g. Kenya
- **Sector-specific** e.g. Saving Brains

Gender Lens Investing

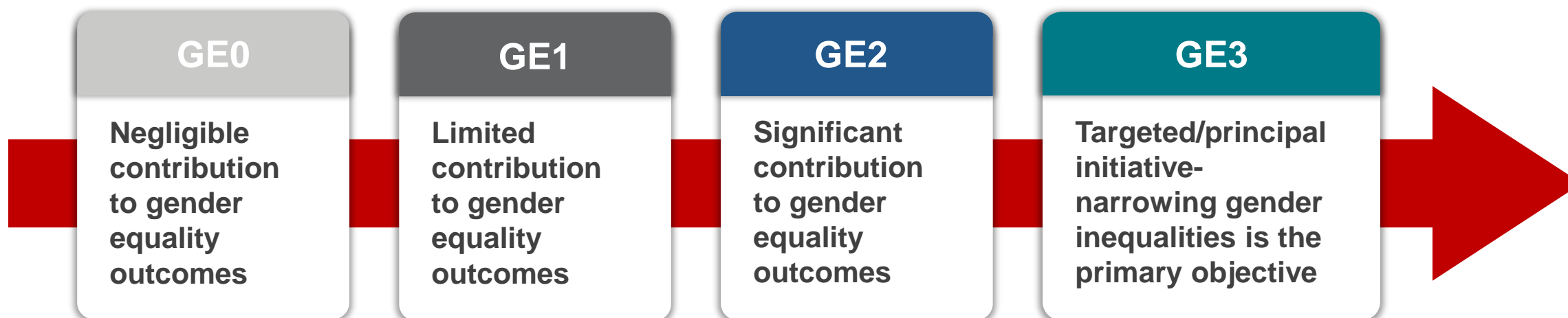
Gender lens investing is demonstrating gender-equality throughout the value chain by considering investments through a number of gender frames, or ‘lenses’.

Example Gender Lenses:

1. **Business model** – products and services inclusively designed with women, girls and other marginalized groups in mind as customers/users and throughout the value chain
2. **Environment** – social norms, policy environment and broader contextual challenges and barriers considered
3. **Leadership & Operations** – focus on funding women innovators, ensuring women senior leadership/board representation and gender-inclusive policies



We assess innovations through a gender lens, using a **Gender Equality Coding System**:



While we seek to **increase the number of innovations selected for funding with high Gender Equality scores**, GCC does not disqualify innovations ranked GE0/1. Rather, we see opportunity to **build gender equality champions** by actively supporting innovators in raising their gender equality scores.

COVID-19: Opportunity for Innovation

Target Populations:



Women, children, adolescents in low- and middle-income countries



People affected by conflict

Areas of Focus:



Local manufacturing of
personal protective equipment
for healthcare workers



Medical oxygen, ventilation
and related training



Dissemination of
life-saving information



Continuity of primary
RMNCH care



Case Studies

Local Oxygen Generation and Supply

Hewatele Limited (Kenya)



Grand Challenges Canada®
Grands Défis Canada

Innovation: Reliable, cost-effective production and delivery of medical oxygen to health facilities with no prior oxygen access via public-private partnership model.

Scaling Model: For-profit oxygen production plants partner with governments and hospitals to supply facilities and catchment areas; associated NGO provides relevant training on oxygen therapy and equipment.

Investment: \$1.08M CAD loan

Impact: **18,300+ lives improved** and **18,100+ lives saved** of patients receiving Hewatele oxygen for medical procedures.

By 2030, estimate **~44,300 lives saved**, **~119,300 lives improved**



COVID-19 Response:

- At request of Kenyan Ministry of Health, providing medical-grade oxygen to **COVID-19 treatment and isolation referral facilities in Siaya county**
- Training healthcare staff on safe administration of oxygen and COVID-19 management

Digital Tools for Life-Saving Information

Praekelt.org (South Africa)

Innovation: **MomConnect** mHealth platform for pregnant women and new mothers in South Africa, promotes healthy behaviours and use of health services via stage-based WhatsApp and SMS messaging.

Scaling Model: Platform owned by and integrated with government health systems to improve service delivery and systems strengthening.

Investment: \$1.1M CAD grant

Impact: **2.78M+ mothers registered** for MomConnect to date; By 2030, expecting up to **6.7M mothers registered**, improving up to **3.7M maternal and newborn lives**

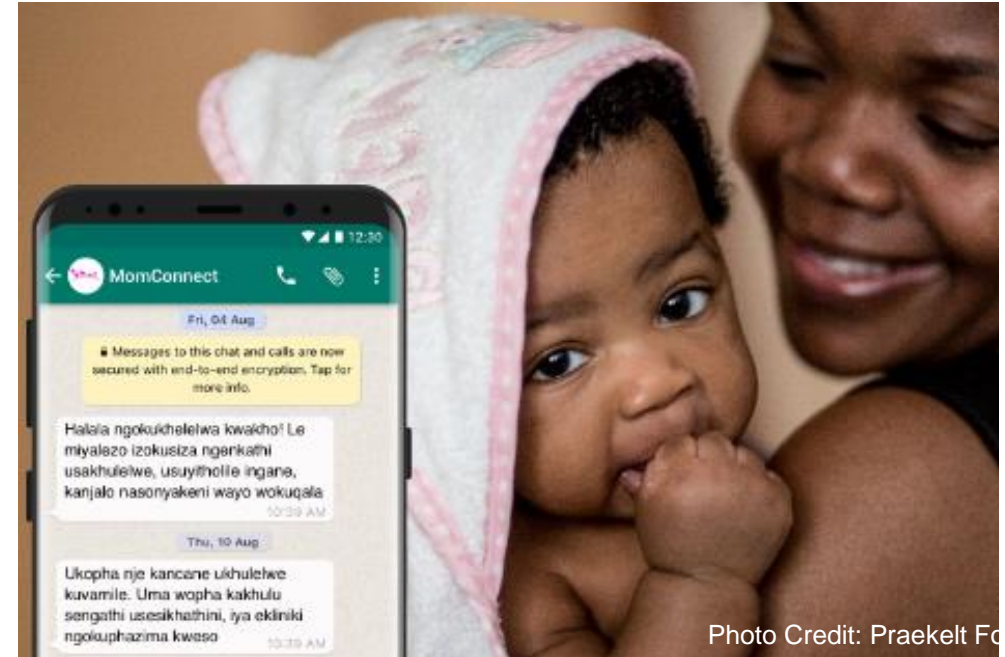


Photo Credit: Praekelt Fo

Gender Strategy

- Adapt marketing and outreach campaign to engage fathers and promote their involvement in childcare
- Integrate rights based language in messaging so women know their rights at home and in seeking health care
- Include LGBTQIA representatives in future consultations regarding content development
- Draft policies around parental leave, inclusion of people of colour, people with disabilities, etc.

Women Helping Women Fight Cervical Cancer

Universidad Peruana Cayetano Heredia; Asociacion Via Libre (Peru)

Innovation: The **HOPE Peru** project aims to reduce high rates of cervical cancer in Peru by informing women about cervical cancer, distributing self-administered HPV tests and providing quick results and referrals.

Scaling Model: Through a cross-subsidization model, sales of HPV tests to higher-income women are leveraged to subsidize the cost of tests for low-income women.

Investment: \$650K CAD grants

Impact: 4,400+ women using HPV tests; 550 women receiving treatment upon testing positive



Catalytic Funding:

- GCC's initial support of \$150,000 enabled the team to demonstrate its ability to promote a cost-effective HPV test and to develop distribution channels.
- Further funding of \$500,000 is supporting the project to spin-off from the Universidad Peruana Cayetano Heredia, creating a separate business entity to implement HOPE Peru's commercial activities in partnership with NGO Via Libre.



Grand Challenges Canada® Grands Défis Canada

T +1.416.583.5821

info@grandchallenges.ca

Grand Challenges Canada
MaRS Centre, West Tower
661 University Avenue, Suite 1720
Toronto, Ontario, Canada M5G 1M1



@gchallenges



Grand Challenges Canada



Grand Challenges Canada



grandchallengesca



grandchallenges.ca

AIR Device for Newborn Resuscitation

Mbarara University of Science and Technology (Uganda)

Challenge: Birth asphyxia is a significant contributor to neonatal mortality, resulting in up to 1.8 million stillbirths and newborn deaths annually.

Innovation: **Augmented Infant Resuscitator (AIR)**, a universally compatible add-on device to existing resuscitation bag-mask devices that enables proper ventilation of newborn babies, while recording objective performance and outcome data for birth attendants.

Investment: \$2.5M CAD grant + loan package

Impact to Date: Birth attendants using AIR **attained effective ventilation of newborns 51% faster** and **maintained effective ventilation 50% longer** than controls

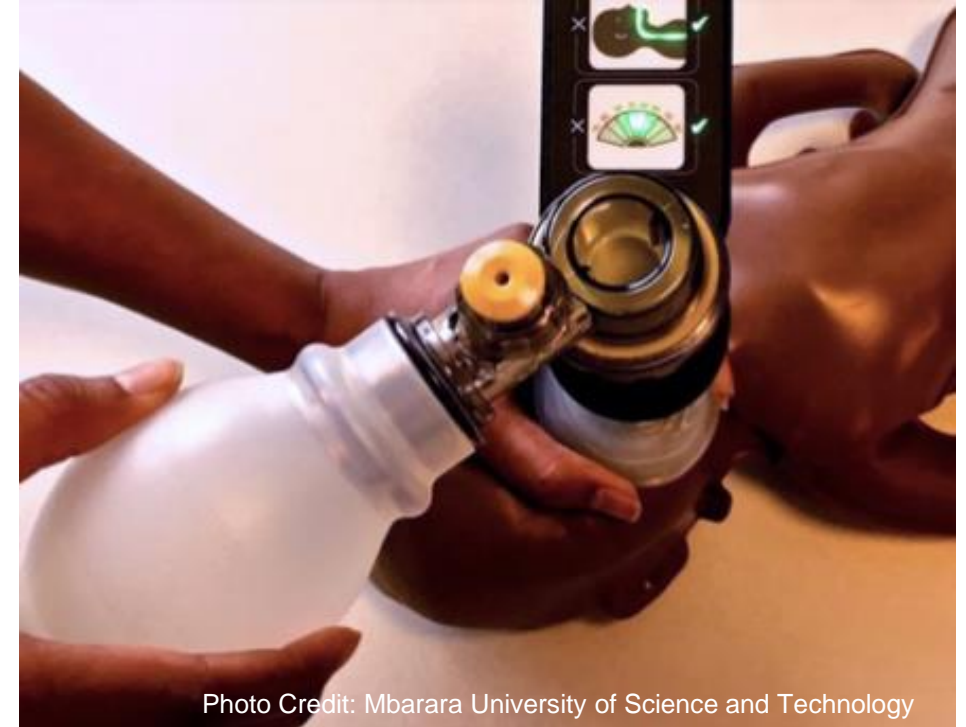


Photo Credit: Mbarara University of Science and Technology

Potential for Transformation:

- **Licensed to Philips Healthcare** for redesign, manufacture and distribution

Newborn Hypothermia Alert Bracelet

Bempu Health Private Ltd. (India)

Challenge: Newborns are unable to regulate their body temperature, which often leads to hypothermia- a condition affecting up to 85% of newborns globally and approximately 4-12 million newborns in India per year.

Innovation: BEMPU Hypothermia Alert Device- a newborn temperature-monitoring wristband that alerts caregivers if their newborn is hypothermic, which enables early medical intervention to avert possible complications like newborn death.

Investment: \$2.4M CAD grant package

Impact to Date: **8,410 lives improved** of low birth weight neonates wearing the BEMPU bracelet, **108 lives saved** due to averted cases of hypothermia among low birth weight neonates



Photo Credit: Bempu Health Private Ltd.

Potential for Transformation:

- By 2030, expecting **up to 1.8 million low birth weight babies accessing bracelets**, and **34,000 neonatal lives saved** due to averted cases of hypothermia among low birth weight neonates as a result of wearing the bracelet

Waste Management for Urban Communities

Sanivation Limited (Kenya)

Challenge: Over 95% of fecal sludge in Kenya is disposed of without treatment. Poor waste management increases risk of diseases such as diarrhea, a leading cause of death among children under five.

Innovation: Container-based waste processing and management system for non-sewered urban communities that cost-effectively manages and treats fecal sludge, converting it into a reusable waste product: charcoal briquettes.

Investment: \$1.78M CAD grant + loan package

Impact to Date: **4,051 lives improved** with use of sanitation facilities, waste removal and treatment



Potential for Transformation:

- By 2030, expecting **up to 451,000 lives improved** with increased access to adequate sanitation
- In partnership with County Government of Nakuru, co-developed Naivasha sub-county's first County-Wide Inclusive Sanitation plan

Hayat App

Aga Khan University eHRC (Pakistan)



Grand Challenges Canada®
Grands Défis Canada

Challenge: Immunization programs in low- and middle-income countries typically operate on paper-based systems, leading to lack of accountability, ineffective monitoring and sub-optimal immunization rates. In Pakistan, 27% of the ~1,000 daily deaths of children under-5 are due to vaccine preventable diseases.

Innovation: **Hayat** (formerly Teeko+)- mobile application to track vaccinations and maternal / child health with real-time data and build comprehensive e-health records for parents and children, improving coverage and accountability at the community level.

Investment: \$1M CAD grant

Impact to Date: **129,617 beneficiaries** registered on for the Hayat application



Photo Credit: Danish Sharif

Potential for Transformation:

- By 2030, expecting up to **211,000 women, girls and children under 2 years old registered** for the Hayat app, **improving 49,700 lives** with reproductive, maternal. newborn and child health services

Proactive Community Case Management

Université des Sciences, des Techniques et des Technologies de Bamako; Muso (Mali)

Challenge: Mali has the 8th highest <5 mortality rate in the world, with over 1 in 10 children in Mali dying before age 5.

Innovation: Proactive Community Case Management (ProCCM)- proactive delivery model for reproductive, maternal, newborn and child health care in which Community Health Workers (CHWs) seek out patients, provide doorstep care and connect them to clinics.

Investment: \$1.07M CAD grant package

Impact to Date: Over **35,000 lives improved** with reproductive, maternal, newborn and child health services as a result of CHW coverage via the ProCCM model



Photo Credit: Muso

Potential for Transformation:

- 2019 **Malian healthcare system overhaul** based on ProCCM strategies tested with government
- By 2030, expecting up to **57,000 lives saved** and up to **319,000 lives improved** with access to care via the ProCCM model

Improving Care-Seeking Behaviour for SRHR

Ipas Development Foundation (India)



Grand Challenges Canada®
Grands Défis Canada

Challenge: Demand for sexual and reproductive health (SRH) services, including safe abortion, has lagged among young women in India due to the significant barriers they face to care.

Innovation: **Youth-based SRH outreach program** using peer-to-peer education to address barriers specific to young women, strengthening their knowledge and agency in accessing a full complement of reproductive rights while also making youth-friendly services available in the public sector.

Investment: \$1M CAD grant package

Impact to Date: **2,639 adolescent girls and young women with lives improved** as a result of SRH services



Photo Credit: Ipas Development Foundation



Gender Equality Score: **2**

Potential for Transformation:

- Engaging in **government-NGO cost-sharing** to strengthen public sector SRH services
- By 2030, expected to improve the lives of up to **2.2 million women and girls** with safe abortion services, long acting reversible contraceptives or treatment for STIs; Youth Ambassadors expected to **reach up to 14.3 million beneficiaries** with SRHR information

Saving Bangladeshi Babies' Brains

International Centre for Diarrhoeal Disease Research (Bangladesh)



Grand Challenges Canada®
Grands Défis Canada

Challenge: Undernourished children are at increased risk for delayed cognitive development, underachievement in school, and persistent behavioural disorders.

Innovation: Nutritional care and play-based psychosocial stimulation to improve early cognitive development of malnourished children, integrated into the existing health care system through community clinics in Bangladesh.

Investment: \$2.9M grant package

Impact to Date: Proof of concept demonstrated **largest cognitive outcome improvement** in Saving Brains portfolio; **80 community clinics** trained in intervention, enrolling 1,597 children per year



Potential for Transformation:

- Evidence generated unlocked **\$1M from Bangladesh government** for transition to scale across **13,000 community clinics**
- By 2030, up to **2.1 million children expected to be accessing the intervention**, of which **1.5 million will experience improvements** in development outcomes

Path to scale is not linear

Mobile Crèches

Innovation: Quality workplace-based childcare (mobile crèches) for young children of migrant workers in India through partnerships with construction companies, NGOs and government bodies



Proof of Concept
(1969 - 2014)

Initial Model: Directly operated crèches run in partnership with construction companies.

Impact: 13.5K children/year served by crèches



TTS*
(2014 - 2016)

Iteration #1: Test training model of other NGOs to replicate & manage crèches on construction sites.

GCC Investment: \$650K grant

Impact: 63K children/year by 2030



TTS4
(2018 - 2020)

Iteration #2: Scale to 4 new industries via NGO replication & refitting government-run centres. Reposition MC as a platform for quality crèche adoption.

GCC Investment: \$1M grant

Impact: 706K children/year by 2030; avg. 161 children/crèche

**Pre-phasing; New industries selected have high migrant work participation (e.g. factories, tea plantations, mines, brick kilns)*

Private partnerships: Critical for both for-profits & non-profits



Grand Challenges Canada®
Grands Défis Canada



Golden Community

TTS2 \$500K grant

Nepal

GE1

Innovation: Safer Births Bundle, package of proven perinatal interventions, medical devices and quality-improvement framework for healthcare workers

Laerdal (MNC) → Golden Community (Innovator)

- Laerdal is leveraging a local NGO, Golden Community, to embed & scale Laerdal's bundle into a national quality improvement system.

Leveraged Funds: Laerdal Global Health \$330K

Scaling Model: Multi-sectoral partnerships; dual market

TTS phase: Introduce and validate Safer Births Bundle in Nepal, starting with launch in 8 public facilities.



Mbarara University

TTS3 \$2.4M grant*

Uganda, Ghana, India

GE1

Innovation: Augmented Infant Resuscitator (AIR), low cost add-on compatible with resuscitation bag-mask devices to measure ventilation quality during newborn resuscitation

Mbarara (Innovator) → Philips Healthcare (MNC)

- Mbarara is leveraging an exclusive commercial license with Philips to manufacture and distribute Mbarara's AIR device; joint commitment to develop clinical use device.

Leveraged Funds: Philips ~\$750K per year

Scaling Model: Licensing; dual market strategy

TTS phase: Complete product realization process, develop go-to-market strategy, test supply chains, etc.

**Includes funds from other Saving Lives at Birth funders*

BOLD IDEAS WITH BIG IMPACT®

Public partnerships: Government uptake takes time and resources



**Friendship
Bangladesh**
\$1M grant

Innovation: Unique 3-tier model of integrated hospital ships, satellite clinics and CHWs able to reach rural migratory people affected by natural disasters

Govt. Partner: Ministry of Health and Family Welfare

Uptake model: Uptake of ongoing costs for integration into national health care system

GCC funding: **TTS3:** Validate methods for smooth transition to govt., advocacy to expand regions of govt. uptake, test replication to other country govts. vulnerable to climate change

2030 Impact: **Lives saved:** 1,750; **Lives improved:** 207K

Uptake: **18 years** (2002-2020)



icddr,b
\$2.96M grant

Integration of a caregiver-led, play-based child development program for malnourished children into community clinics

Ministry of Women and Children's Affairs

Program integration into all community clinics nationally

TTS:** Validate impact on early brain development; engage govt partners and develop relationships to map out long term path to scale & sustainability
TTS4: Set up M&E, training, & supervisory systems within current govt infrastructure to facilitate uptake

Lives improved: 1.5M

20 years (1999-2019)

Transformational gender strategies address important social determinants

Grand Challenges Canada®
Grands Défis Canada

University of Ibadan – GE2



\$260K grant
Nigeria, Tanzania

Innovation: Culturally adapted dementia screening tool combined with cognitive stimulation therapy to target the burden of dementia

Gender Equality Strategy:

- Due to historical gender imbalance in access to education, screening tools and intervention materials are designed without education bias to ensure equal access to diagnosis and treatment

Earth Enable – GE2



TTS2 \$500K grant
Rwanda, Uganda

Durable, affordable earthen floor with sealant that forms barrier between bacteria and parasites in the ground.

- Women and girls, responsible for caretaking and household chores, disproportionately affected by health risks
- Recruit more women as frontline sales staff

SaCoDe – GE3



TTS2 \$500K grant
Burundi

Reusable sanitary pads bundled with MHM education program, facilitated through school clubs, SMS and magazines.

- Due to lack of access, pads designed with strings so can be worn without underwear
- Vulnerable women employed to produce and sell pads
- Education targets stigma around menstruation

Canadian Coalition for Global Health Research



CCGHR

Canadian Coalition for
Global Health Research

CCRSM

Coalition canadienne pour la
recherche en santé mondiale

www.CCGHR.ca

cchgr@ccghr.ca

Canadian Coalition for Global Health Research

Founded in 2003

29 Canadian University Members

17/17 Canadian medical faculties

12 Health sciences faculties

400+ global health researchers (Canadian + international)

Mission

To promote global health research as a model and a driver of collaboration, partnership and equity in the generation and use of new knowledge for improving health and wellbeing globally.

**Our mission:
how do we do
this?**

Capacity building:

Country Partnerships

Policy and Advocacy

Student & Young Professionals Network

University Advisory Council

Working groups

Research in support of our mission

Capacity Building

Coalition Institutes: 2-3 days, cross cutting issues

Principles of equity in conduct of research

Measuring health impact of mining

Resources

Principles for global health research

Partnership Assessment Toolkit

Knowledge translation curriculum

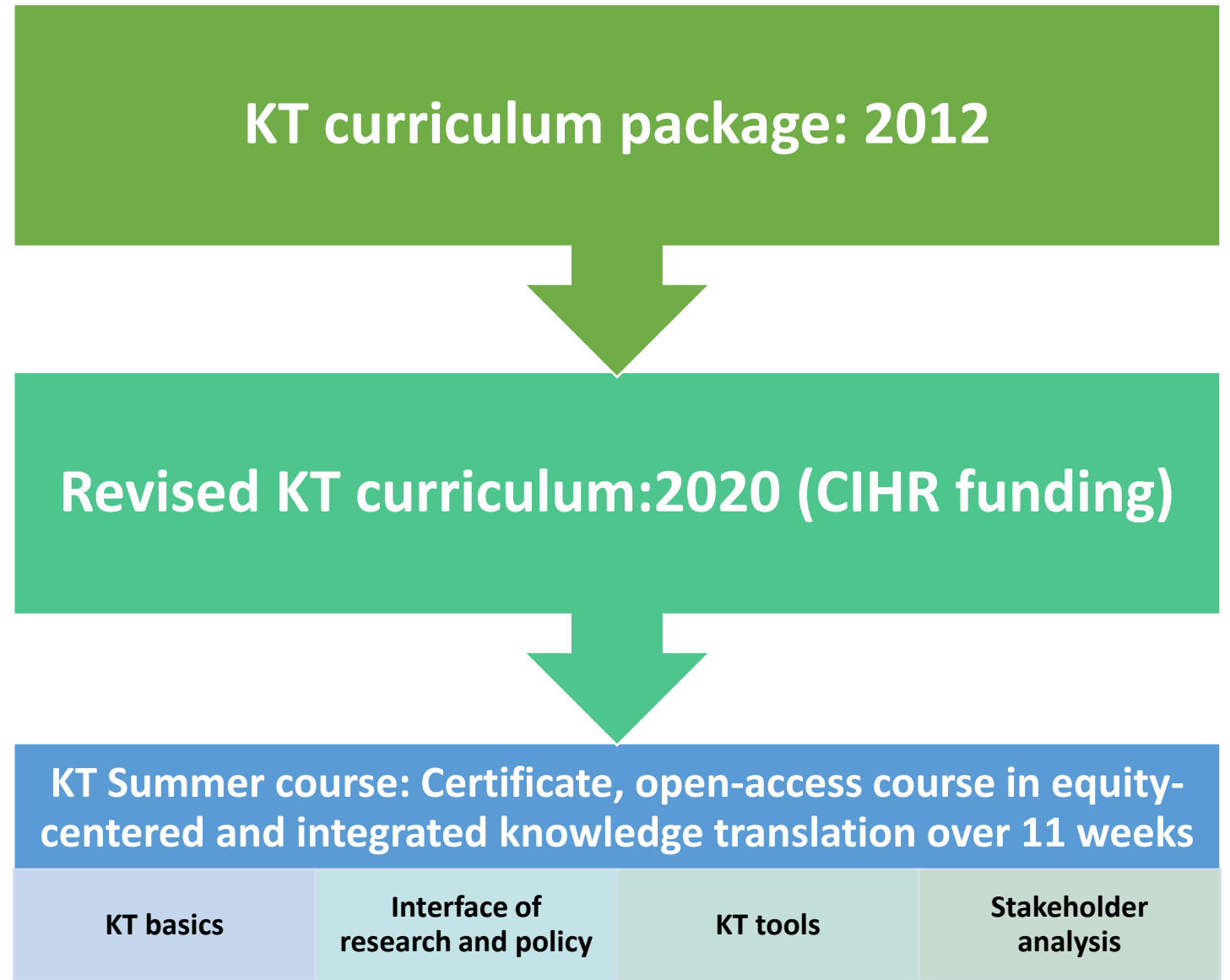
**Coalition for Advanced Research Training in Africa
(CARTA)**



Principles for Global Health Research:

Equity at the Heart

Knowledge Transfer



Policy and Advocacy

Response to COVID-19 pandemic

- Challenge to Joint statement of WHO on allocation framework
- Multi-institutional statement in support of COVAX
- Webinar: From policy to practice – implications of COVID-19 at the global level
- Student chapter fundraising in support of local programs supporting marginalized populations

National consultations making the case for global health research in CIHR's 2020 strategic plan

**University
Advisory
Council:
All 29
university
members**

- **Organize regional Coalition Institutes focused on capacity-building and networking**
- **Curriculum sharing and preparing lists of courses with materials relevant to global health research**
- **Fostering a transdisciplinary research teams**
- **Promoting research harmonization in Canada - value-added coordination and collaboration.**

Working Groups: Climate change and health

Webinars: seven so far in 2020

**Policy Intersections for the Global
Crises of COVID-19 and Climate
Change**

**Zoonoses, Wildlife and Humans in
an Era of Climate Change**

Policy briefs: CIHR and GAC



**Research in
support of
CCGHR's
mission**

**Harmonized Metrics Project:
CCGHR: McGill, U de Laval, UBC**

**Global health partnerships equity
assessment tool**

Monitoring maternity experience tool

**Male engagement in maternal and child
health tool**

**90% of what has been presented accomplished through the
volunteer work of our members**



Thank you