

# Research Priorities in Sexual and Reproductive Health and Rights for Bangladesh Using CHNRI Method: An AdSEARCH by icddr,b Initiative

Abu Sayeed<sup>1\*</sup>, Nondo Saha<sup>1</sup>, Shafiqul Ameen<sup>1</sup>, Lubna Hossain<sup>1</sup>, Hassan Rushekh Mahmood<sup>1</sup>, Ema Akter<sup>1</sup>, Sahar Raza<sup>1</sup>, Shams El Arifeen<sup>1</sup>, Anisuddin Ahmed<sup>1</sup>, Ahmed Ehsanur Rahman<sup>1</sup>

<sup>1</sup>icddr,b \*Correspondence: **Abu Sayeed**, Research Investigator, Maternal and Child Health Division, icddr,b; Mail: **abu.sayeed1@icddrb.org**

## Background

Sexual and Reproductive Health and Rights (SRHR) are essential for individuals' health and survival, economic development, and the overall well-being. Advancing Sexual and Reproductive Health and Rights (AdSEARCH) by icddr,b aimed to improve Sexual and Reproductive Health (SRH) outcomes and realise rights among different population groups with distinct SRH needs in Bangladesh, and undertook a research prioritisation exercise.

## Objective

The aim of the study was to identify health research priorities related to SRHR in Bangladesh.

## Methods

**Study Method:** Child Health and Nutrition Research Initiative (CHNRI).

**Context:** Bangladesh.

**Phases:** Four Phases - Formation of process management team and defining the context and criteria; Selection of technical expert and systematic listing of Research Questions (RQs); Scoring of RQs and criteria ranking; Data analysis

**Domain:** Four Domains - Description, Development, Discovery, Delivery

**Calculation:** Weighted Research Priority Score (wRPS), Average Expert Agreement (AEA)

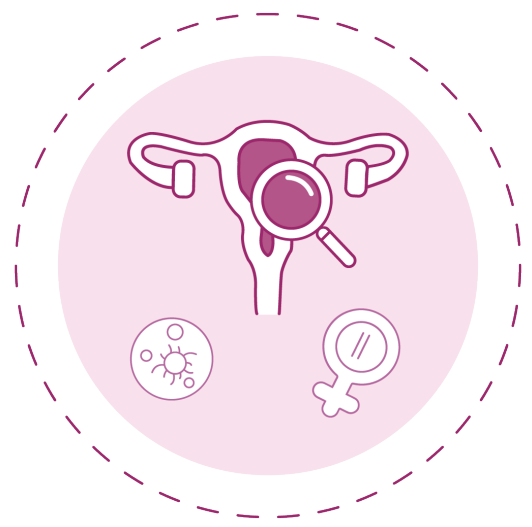
**Theme:** Five themes on



Adolescent Health (AH)



Fertility (F)



Gynaecological Issues (GI)



Maternal and Neonatal Health (MNH)



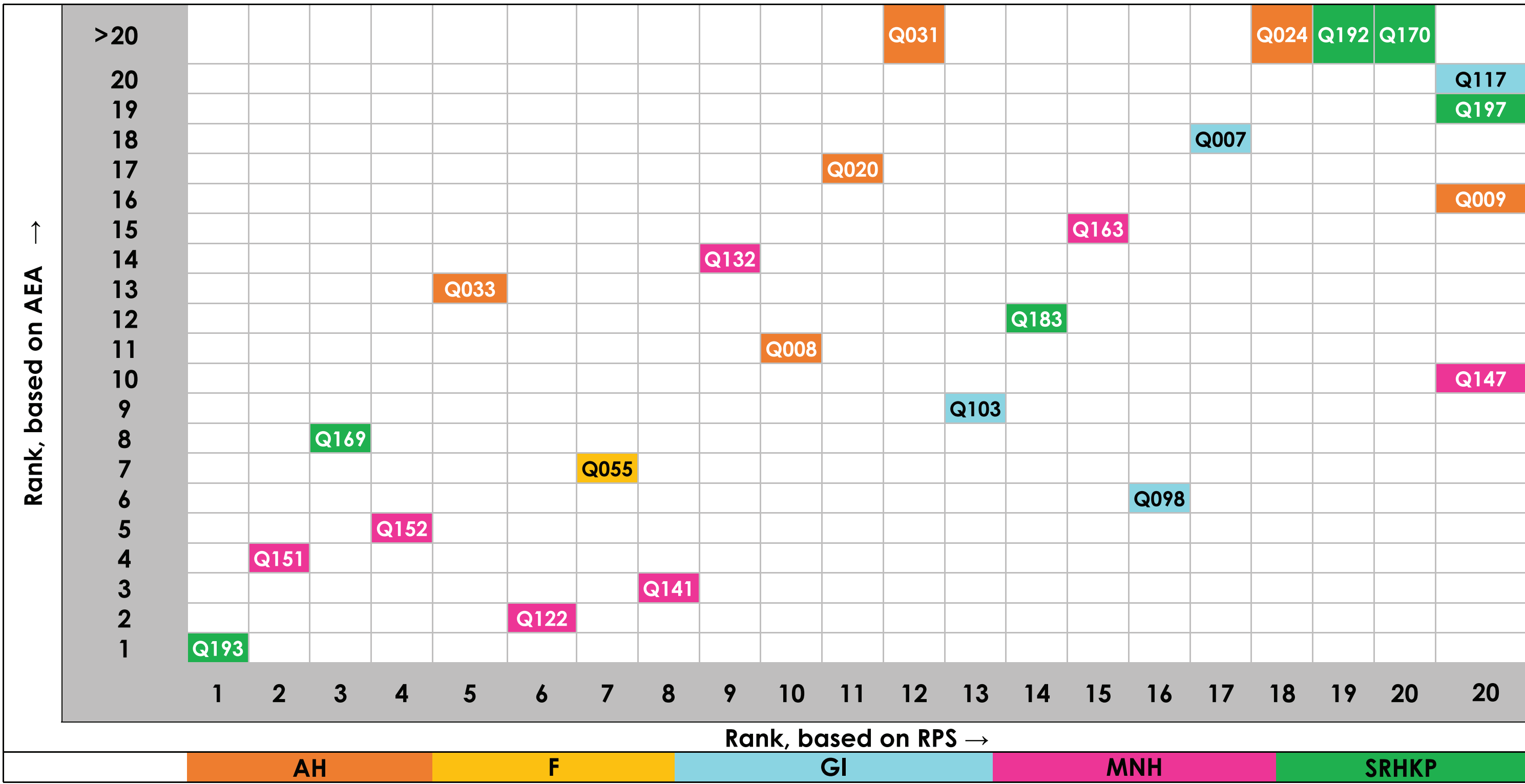
SRHR of Key Populations (SRHRKP)

## Results

**Table:** Top 20 RQs based on weighted Research Priority Score (wRPS)

No.	Research Questions	Theme	Domain	wRPS
1	What strategies can be employed to address stigma and discriminatory practices towards KPs and mitigate their negative effects on the sexual and reproductive health (SRH) behaviors of KPs?	SRHRKP	Discovery	0.945
2	What are the barriers and challenges for implementation of Newborn Stabilising Unit (NSU) at upazilla level hospital?	MNH	Delivery	0.932
3	What are the obstacles in raising awareness about the SRHR of KPs in Bangladesh?	SRHRKP	Delivery	0.926
4	What is the impact of the Postpartum Haemorrhage (PPH) bundle approach on the management of PPH cases?	MNH	Description	0.925
5	What is the effect of adolescent pregnancy on stunting, anemia and risk of NCDs like overweight, diabetes, and hypertension?	AH	Description	0.925
6	Does the enhancement of counselling on danger signs during Antenatal Care (ANC) contribute to a significant reduction in adverse birth outcomes?	MNH	Description	0.925
7	What are the key barriers and facilitators to the successful implementation of strategies aimed at promoting proper birth spacing, specifically among newlywed and underage married women, and how can these strategies be effectively integrated into existing healthcare systems?	F	Delivery	0.924
8	What is the burden and risk factors for mental health issues among pregnant women?	MNH	Description	0.924
9	What are the bottlenecks, barriers, and challenges in identifying and managing high-risk pregnancies in low- and middle-income countries like Bangladesh?	MNH	Delivery	0.922
10	What is the impact of school-based comprehensive sexuality education given to young adolescents on prevention of gender-based violence, unsafe abortion, and smooth transitioning to adolescence from childhood?	AH	Description	0.920
11	What are the barriers faced by health care provider to provide mental health services among adolescents?	AH	Delivery	0.919
12	What is the impact of adolescent pregnancy on maternal mortality/morbidity?	AH	Description	0.917
13	What are the main challenges, considerations, and enablers to implementing Human Papillomavirus (HPV) testing for cervical cancer screening?	GI	Delivery	0.915
14	What strategies need to be implemented to get better SRH & family planning service from government health system by KPs?	SRHRKP	Discovery	0.914
15	What are the most effective interventions for the prevention and treatment of low birth weight infants?	MNH	Description	0.912
16	What strategies can be implemented to scaling up the early detection of gynaecological cancers in Bangladesh?	GI	Discovery	0.912
17	What is the impact of introducing life skills lessons in the school educational curriculum on empowerment of adolescent girls and prevention of child marriage?	AH	Description	0.910
18	What is the impact of health education on the preference of using menstrual kit among adolescent girl?	AH	Description	0.908
19	How do stigma and discriminatory practices impact the sexual and reproductive health behaviors of KPs?	SRHRKP	Description	0.905
20	What challenges do KPs faced during COVID-19 testing, treatment when COVID-19 positive, and the administration of vaccination against COVID-19?	SRHRKP	Delivery	0.904

**Figure:** Top 20 research questions based on cross-cutting value of RPS and AEA



Considering both weighted RPS and AEA, there was considerable overlap between top 20 RQs. Among the top 20 RQs ranked by weighted RPS, 16 RQs were among the top 20 RQs ranked by weighted AEA.

## Conclusion

The study results have strongly prioritised intervention research to understand barriers, challenges, assess effectiveness and uptake of evidence-based interventions combined with new innovative interventions related to SRHR in Bangladesh.



Full list of RQs is available at QR Code

This study is funded by Global Affairs Canada (GAC) through the Advancing Sexual and Reproductive Health and Rights (AdSEARCH) by icddr,b project. Grant number: SGDE-EDRMS-#9926532, Purchase Order 7428855, Project P007358.

