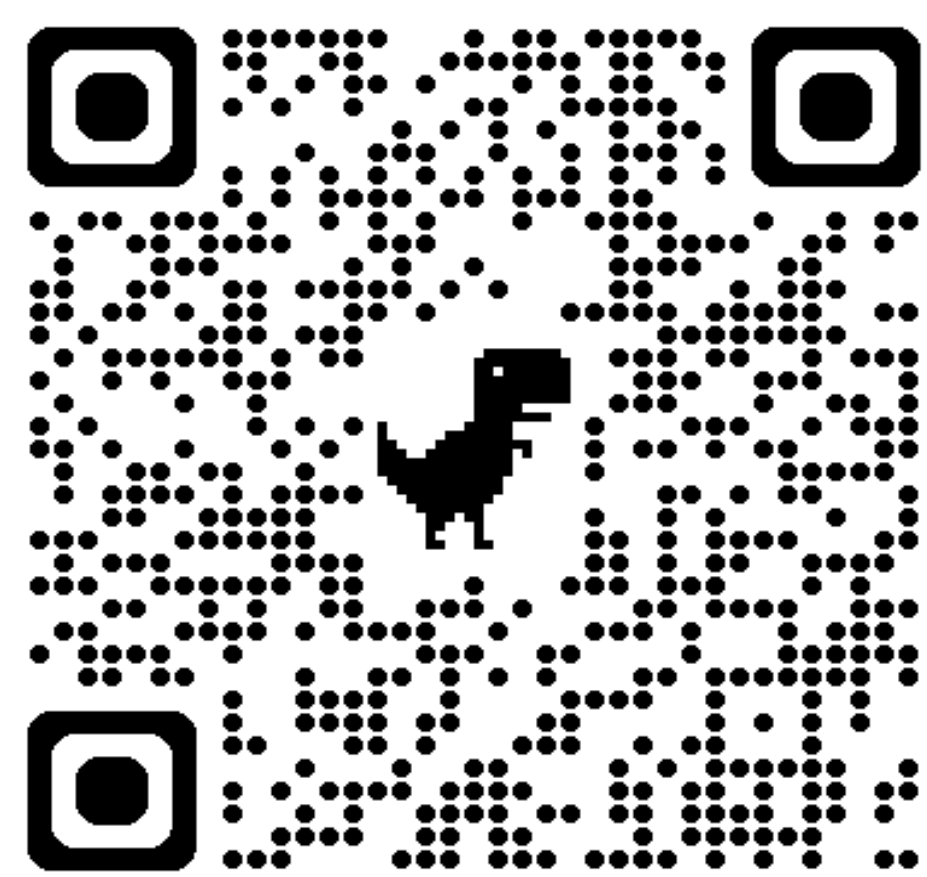
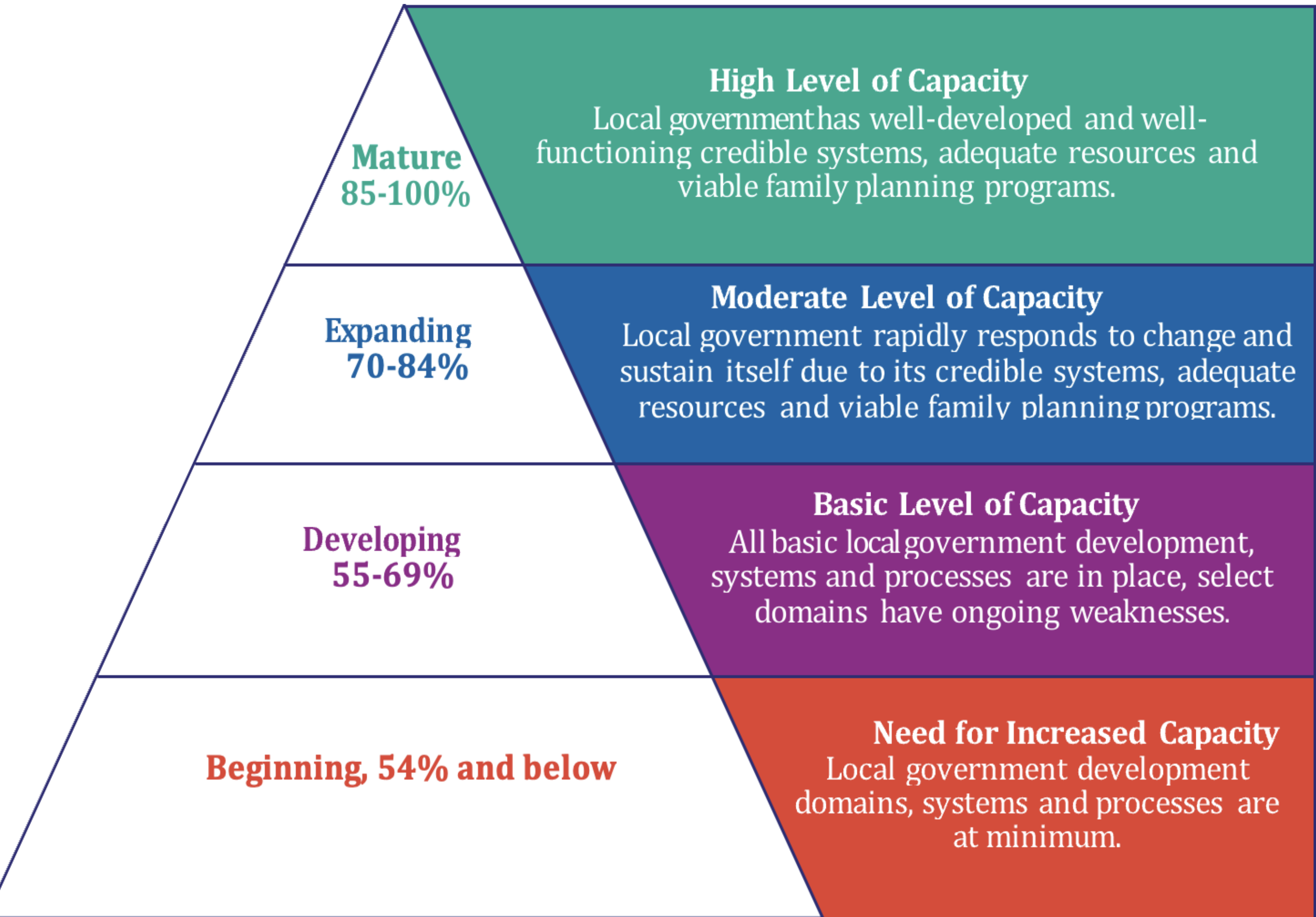


Embedding Coaching and Technical Assistance Teams Within Government Ministries, Departments, & Agencies to Foster Capacity Strengthening, Ownership, and Sustainability



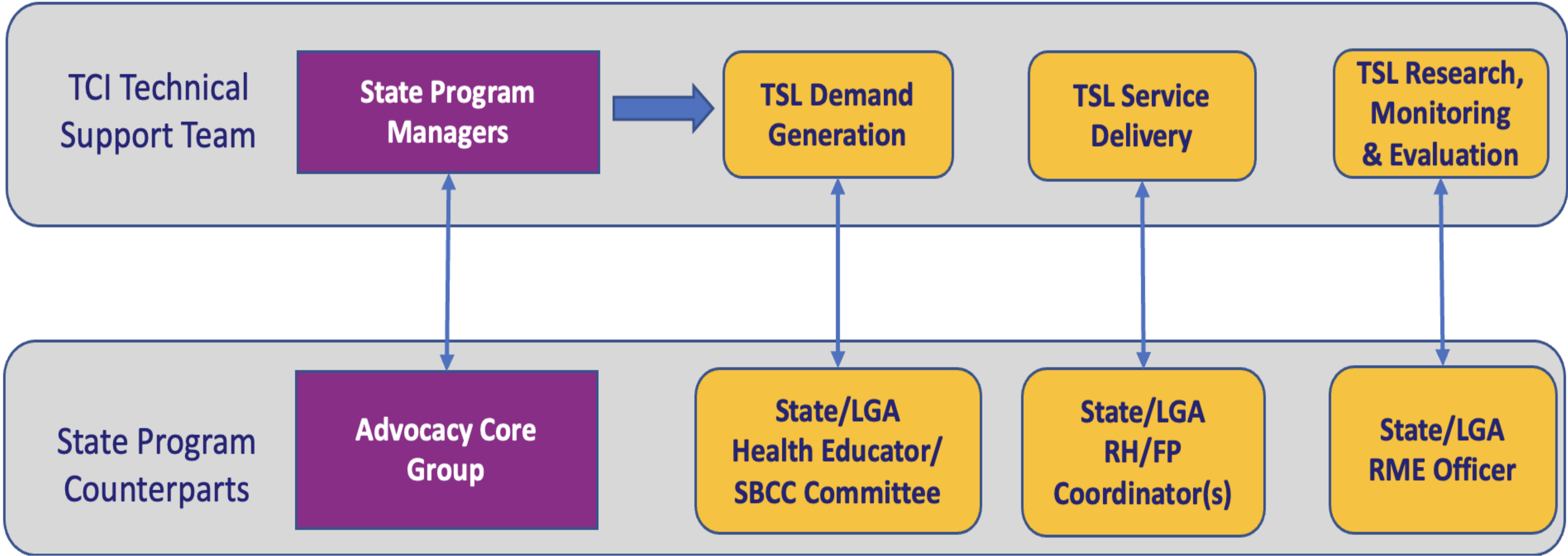
Objective

Describe the embedded coaching & technical assistance model used in the implementation of a government-led RH project across 12 states in Nigeria

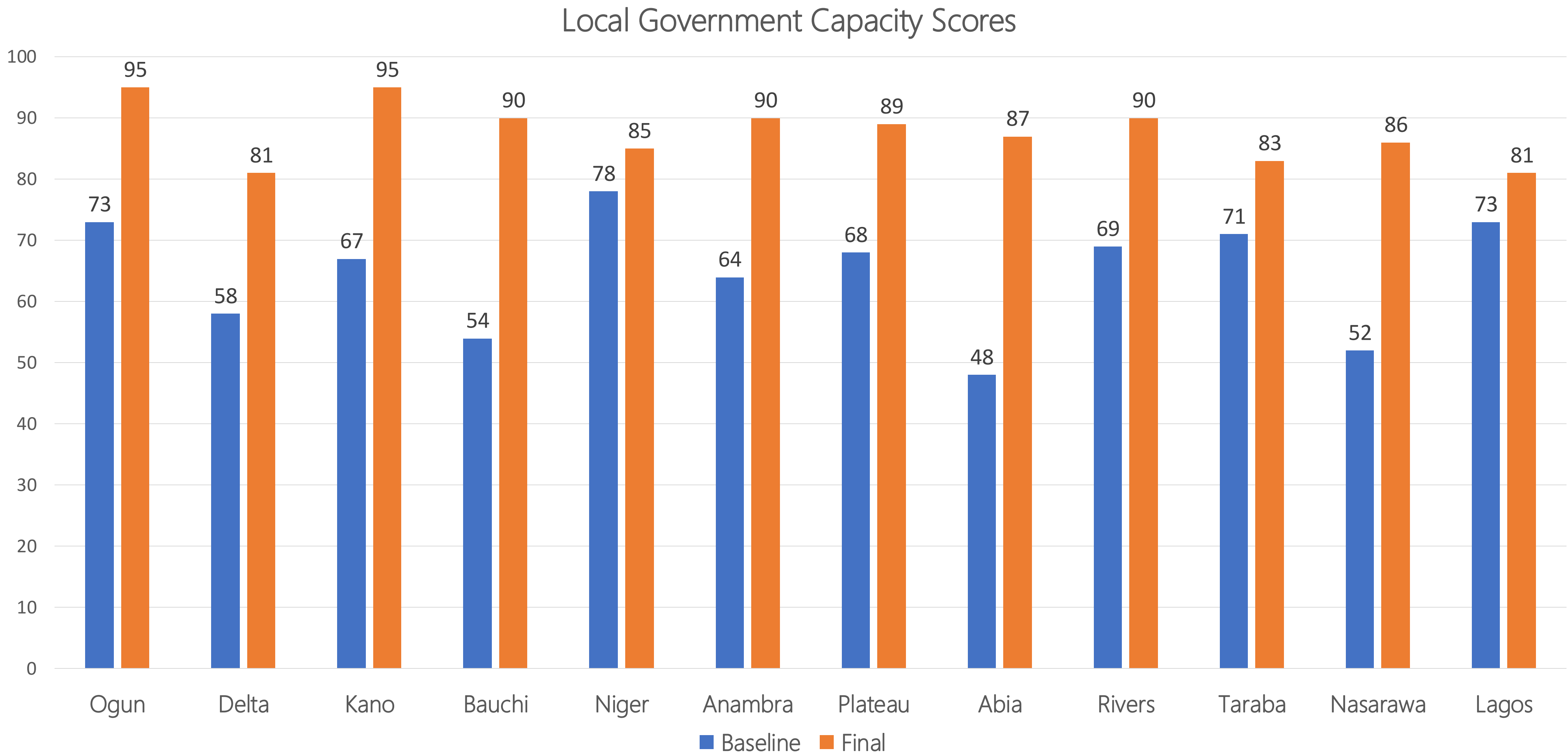


Methods

Co-location with local government teams
Day-to-day coaching & technical support for government teams
Quarterly progress measurement using a self-reliance tool
Joint implementation of corrective actions



Results



Embedding Coaching & Technical Assistance within Government MDAs is a great strategy to increase local government leadership, ownership, and sustainability of public health interventions, thus reducing government’s dependence on international partners and donors for public health program implementation and funding.